

M 208

Montageanleitung

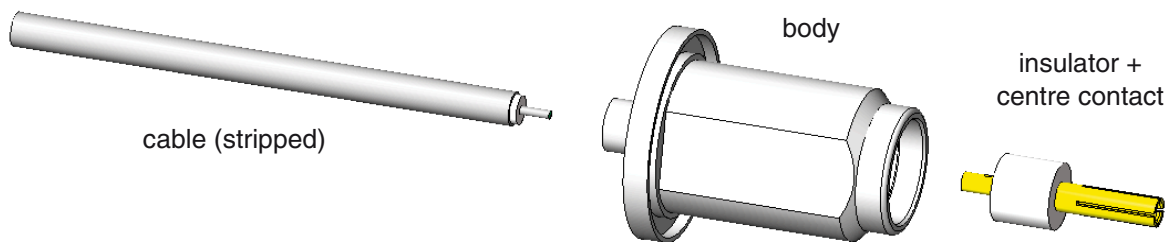
Assembly Instruction

IMS CONNECTOR SYSTEMS

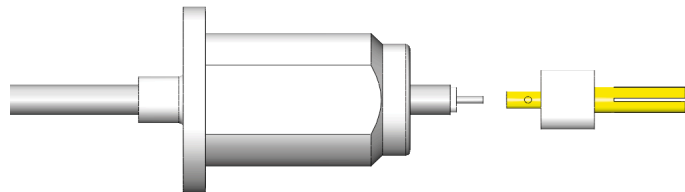
HF-Steckverbinder
RF Connectors

Description: Cable mount jack

Using parts:

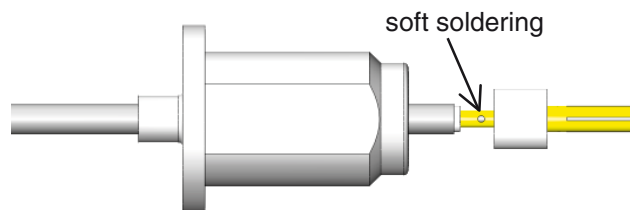


1.) Slide the cable through the body.

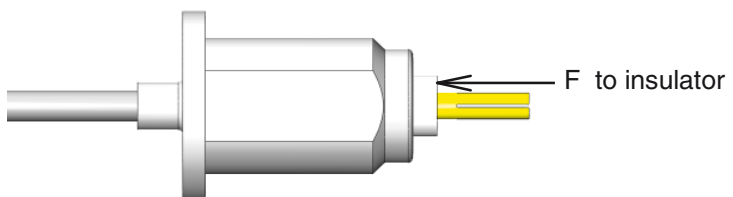


2.) Slide the centre contact on to the cable

3.) Soft soldering the centre contact.



4.) Press all into the body until to dim. $5,2 \pm 0,1$



5.) Soft soldering the outer contact.

