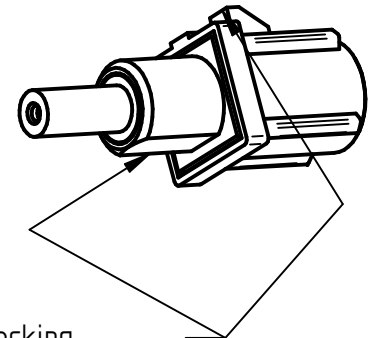
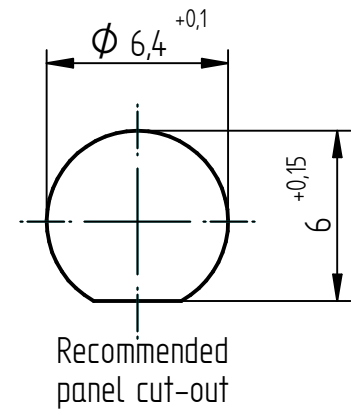
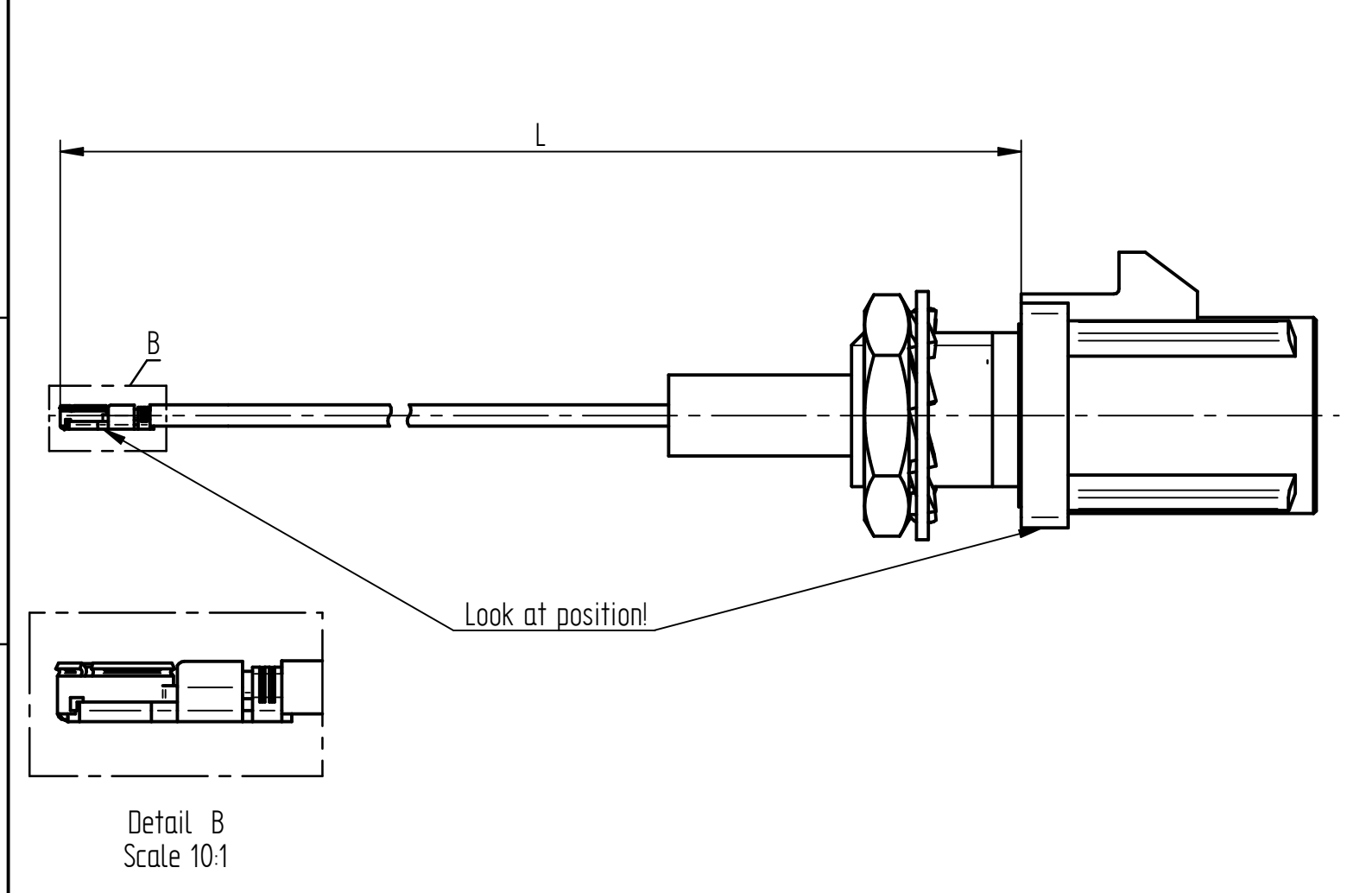
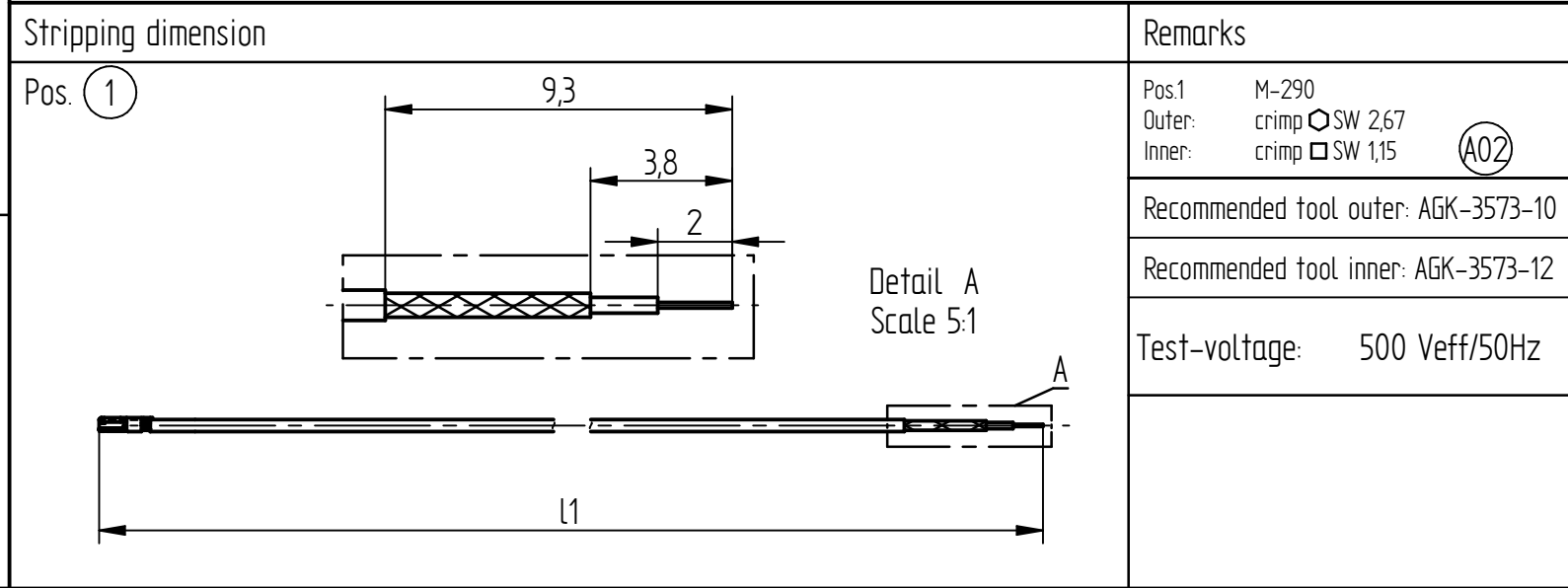


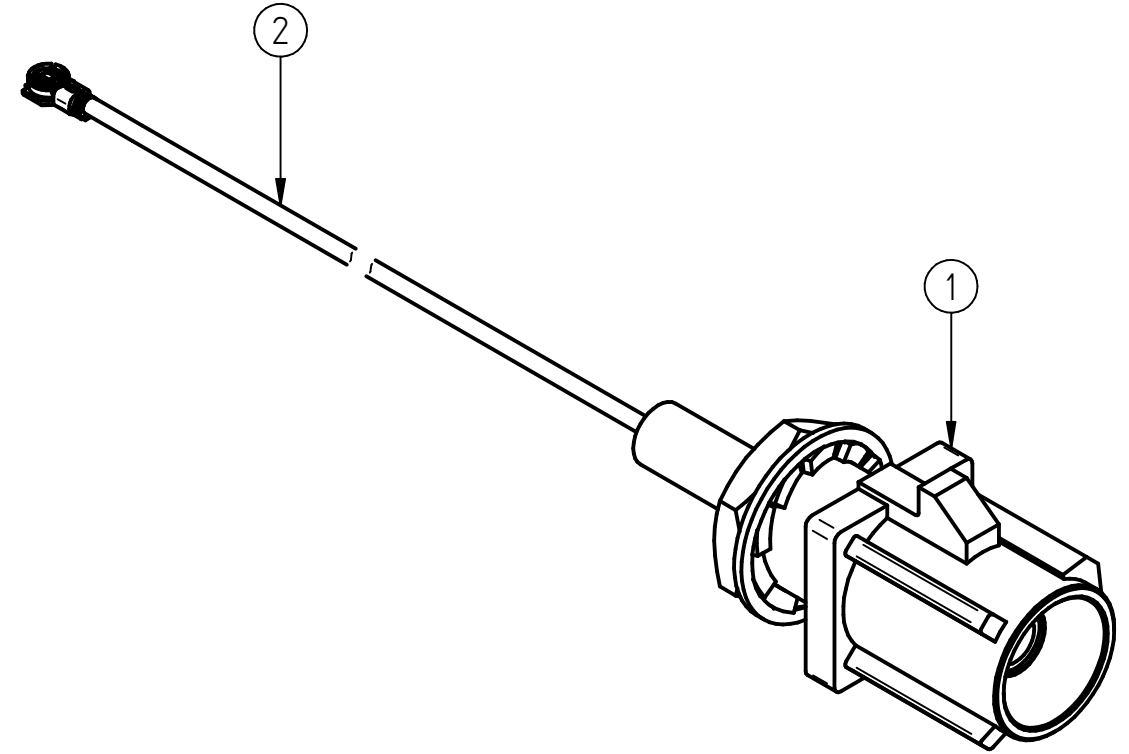
Status: Release

| Pos. | Pcs. | Description | Type-No. | Remark |
|------|------|-----------------------------|--------------------|----------------------|
| ① | 1 | SMBA (m) - Cable mount plug | 5875.SMBA.1X10.049 | X = see coding table |
| ② | 1 | Cable with connector | IPEX MHF 4 Ø0,81 | |
| ③ | | | | |

| Cable | X= | Pcs. | Cable plug Part.No.IMS | Cable type | Cable Part.No.IMS | Pcs. | Cut length l1 | Total length L |
|-----------|----|------|------------------------|------------|-------------------|------|---------------|----------------|
| K-3361-01 | D | 1 | 1083131 | IPEX Ø0,81 | 1128795 | 0,5 | 148,4±3 | 150±5 |
| K-3361-02 | I | 1 | 1083132 | IPEX Ø0,81 | 1128795 | 0,5 | 148,4±3 | 150±5 |



Area directed to primary locking
Flattening is positioned to latching nose



Nut and washer
are enclosed separately.

| design | A02 | inner crimp size changed | 16.01.25 | bgréczi |
|------------------|------|--------------------------|----------|---------|
| Change ID | Rev. | Alteration | Date | Name |
| Revision history | | | | |

| | | | | | |
|------------------------------|--|--|--|---|-----------------------|
| Projection - ISO 5456 | Unit system - Metric All dim. in [mm] | General tolerance ISO 2768 mH | Stripping tolerance AA-CS-12 <i>HyperLink</i> | Document type Cable assembly drawing | |
| Created by bgréczi | Approved by Sefcsik / 17.01.25 | Title RF-flexible Cable Assembly | Drawing number K-3361-XX | | Scale 4:1 |
| IMS CONNECTOR SYSTEMS | | Supplementary title HF-Leitung Flexibel | Rev. A 02 | Date of issue 26.11.2024 | Lang. Sheet EN 1/1 |

ISO 16016
All copyrights reserved. This drawing can neither be copied nor made available to third parties or competitor companies without our written permission.